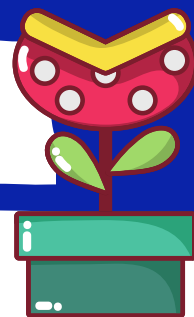




LOCKELAND DESIGN CENTER PTO 2024-2025 ANNUAL REPORT



PRESIDENT'S MESSAGE

On behalf of the LDC PTO board, I would like to sincerely thank all of Lockeland's teachers, staff, families, and community supporters for a wonderful 2024-25 school year.

Thanks to the generous support from families, local businesses, and some exciting fundraisers, we raised over \$150k to support Lockeland! These funds pay the salaries of two staff positions at Lockeland—both a reading and math interventionist—as well as provide additional supply budgets and resources to all teachers and staff. Your continued support is critical to maintaining these supports for our beloved school.

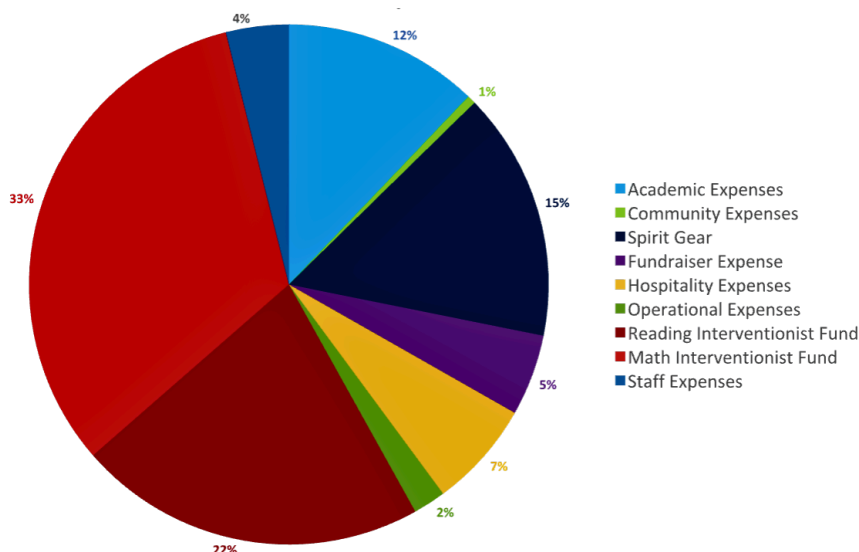
Thank you to Dr. Hunt for his leadership and to all the administrative staff for everything they do to keep Lockeland thriving for all students. Thanks to the many, many parent volunteers, who help with PTO efforts, classroom parties, events, gardening, composting and so much more.

Finally, I want to thank this year's PTO board for their outstanding dedication and tireless efforts. Great job!

-Lauren Wade Walsh, President

BUDGET

- **Forecasted Revenue** for the 2024-2025 School year is approximately **\$155,000**. Our primary sources of funding include \$77,000 from the Invest LDC! Campaign, \$30,000 in Community Investment, \$30,000 from merchandise sales, and \$11,000 raised through events.
- We project that **total expenditures** through May 31, 2025 will be approximately **\$130,000**. The largest expenditures include **Reading and Math Interventionists** and spirit gear.
- We anticipate ending the year with a cash balance of approximately \$60,000, with an additional \$90,000 in reserve savings.
- The budget for 2025-2026 will be formally approved at our May 2025 General Board meeting.



- We continue to collaborate closely with Dr. Hunt and the Teaching Staff to align our spending with student and teacher needs. One of our key priorities remains ongoing support for both Reading and Math Interventionists, ensuring impactful, direct academic support for our students.

INDIVIDUAL FUNDRAISING REPORT

Thank You, Lockeland Families! This school year, Invest LDC raised over **\$77,000** in support of our students and staff!

Invest LDC! is our annual fundraising campaign driven by the support of individual families and friends of the Lockeland PTO. This year, we focused on increasing participation across our entire school community—and we're thrilled to share that more than half of our families joined the effort! The **Invest LDC! campaign contributed over \$77,000**, making up more than half of the PTO's total annual income. This is a **40% increase from last year!** These funds play a vital role in ensuring we can continue to enhance the educational experience at LDC in the year ahead.

Fundraising efforts for Invest LDC! include online donations through the PTO website and the ongoing **Bike Pavers Sale**, which continues through May.

We are so grateful to every family who participated and to those who continue to support our mission. Thank you for making this another incredible year at Lockeland!

Kali Huff, VP Fundraising, Individual Giving
Alli Barns, Assistant VP Fundraising, Individual Giving

**INVEST
LDC!**



COMMUNITY LEADERS

For the 2024-25 year, Community Leaders donations totaled over **\$32,000** and included the following businesses. Thank you so very much to all of these sponsors in our community!





FAMILY MOVIE NIGHT

The PTO was thrilled to host a Family Movie Night again this year.

Each year, we love to end our fall fundraising campaign, InvestLDC!, with a Family Movie Night! We handed out free popcorn, sold pizza by the slice, and enjoyed watching Disney's *Wreck-It Ralph* under the stars.

Many thanks to our popcorn poppers, clean-up crew, and the LDC administration for giving us access to the school restrooms!

LDC COMMUNITY FUNDRAISER NIGHTS & EVENTS

We had so much amazing support from the business and parent community this year in a variety of ways, including Community Leaders' donations, **Love & Exile**, **Jeni's**, **Top Golf**, **Titans**, **Cherries**, and **Rivergate Skate** Spirit Nights. Our community fundraising events earned over \$11,000 for our school.

**LOVE &
EXILE
BAR**

CHERRIES



VOLUNTEER SHOUT OUTS

The main driving force behind LDC is our wonderful volunteers! The LDC administration and staff would like to extend many thanks to all of the volunteers who help make our school great! Parents have volunteered in a variety of ways this year:

Sent in snacks & treasure box items, Led stations at Field Day, Helped with class parties, Provided sweet treats for LDC staff & administration, Helped with Lockeland Live!, Participated in Fun Run & Running Club, Donated supplies for class projects, Helped students find library books & checkout, Planted & nurtured the school garden



LOCKELAND LIVE! LEVEL UP

Lockeland Live! Level Up was a success. Our kids impressed us with their talent and creativity, and kept us laughing along the way! Because of the amount of donations and volunteer hours, we raised **\$3345** for the PTO general fund.

Many thanks to all the volunteers who helped with the fantastic decorations, concessions, t-shirt design and sales, tech, and stage managing:

- Hosts **Dr. Hunt, Ms. Scott**, and fifth graders **Charlie Groves, Mabel Lapinski, Josie Sacks, Stella Swafford**, and **Sloane Young**
- **Dr. Hunt** and the teachers and staff who entertained us with their creativity and humor
- Our amazing and talented students
- **Ronée Swafford** and **Alex Boenigk** for sound engineering and all things tech
- Stratford High School Principal, **Dr. Michael Pratt** and **Mr. Elijah Ammen**, English Teacher and auditorium liaison
- **Claire DeRoberts** and volunteers for the amazing set decorations
- **Denise Downs**, the **Downs family** and **Roy's Meat Service** for donating concessions and coordinating the sales
- **Michael Lapinski** for an amazing t-shirt design and graphics and **Mandy Gillian** for streamlining the t-shirt sales

AFTER SCHOOL CLUBS

It was another successful year for after-school clubs. **We increased our club offerings by 60% over last year**, giving our students the opportunity to participate in Running Club, Art Club, Science Club, Chess Club, Ukulele Club, Aikido Club, Nature Club, and Yoga Club. We appreciate the feedback that was provided on the after-school clubs survey that we sent out in April! Over 75% of survey participants felt very satisfied with our club offerings and over 80% felt that clubs exceeded their expectations. In addition, we received great feedback on areas where we could continue to show improvement.

As we move into the 2025-2026 school year, we look forward to leveraging your feedback to help us ensure that our after-school clubs continue to meet the needs and interests of all of our students. We are truly grateful for the support of our teachers and staff, club vendors, and parent volunteers who helped make this year a success!

2024-2025 LDC BOARD / 2025-2026 LDC BOARD SLATE

President: Lauren Walsh (24) / David Green (25)

President Elect: David Green (24) / Gretchen Selcke (25)

Secretary: Jamie Drown (24) / Jamie Drown (25)

Treasurer: Emily Crawford (24) / Emily Crawford (25)

Assistant Treasurer: Claire DeRoberts (24) / Derek Harper (25)

Vice President of Communications: Gretchen Selcke (24) / Heidi Trow McGhee(25)

Vice President of Membership: Mandy Bauman (24) / Mandy Bauman (25)

Vice President of Individual Fundraising: Kali Huff (24) / Kali Huff (25)

Assistant Vice President of Individual Fundraising: Alli Barns (24) / Alycia Young (25)

Vice President of Community Support: Devin Kindt (24) / Mara Drimmer (25)

Assistant Vice President of Community Fundraising: Mara Drimmer (24) / Devin Kindt (25)

Vice President of Grade Level: Jenny Luckett (24) / Alli Barns (25)

Vice President of Family Events: Julie Jenkins (24) / Julie Jenkins (25)

Vice President of Student Engagement: Dawn Ducote (24) / Jenny Luckett and Rachel Mitchell (25)

Clubs Coordinator: David Green (24) / Adria Rich (25)

Merchandise Chair: Mandy Gillian (24) / Mandy Gillian (25)

Past President: Megan Manly (24) / Lauren Wade Walsh (25)

Want to know what's going on at LDC?

- **Join our Remind account at**
<https://www.remind.com/join/a2eha7>
- **Subscribe to the LDC PTO Newsletter at LockelandPTO.org**
- **If you are interested in serving on a future board, please reach out to us**

